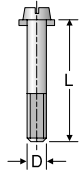


SLA

Slotted Screws

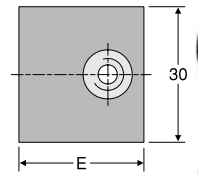
TUBE FITTING PART #	GROUP #	D (mm)	L (mm)	STANDARD FROM STOCK
SLA0X	0	M6 x 1	20	•
SLA2X	2	M6 x 1	25	•
SLA3X	3	M6 x 1	30	•
SLA4X	4	M6 x 1	35	•
SLA5X	5	M6 x 1	50	•
SLA6X	6	M6 x 1	60	•



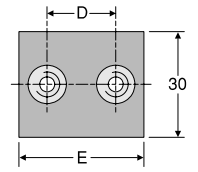
APKA

Weld Plate – Short

TUBE FITTING PART #	GROUP #	D (mm)	E (mm)	STANDARD FROM STOCK
APKA0X	0	—	30	•
APKA1X	1	20	34	•
APKA2X	2	26	42	•
APKA3X	3	33	50	•
APKA4X	4	40	50	•
APKA5X	5	52	72	•
APKA6X	6	66	88	•



Group 0



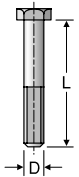
Groups 1-6



SSLA

Hex Head Bolt

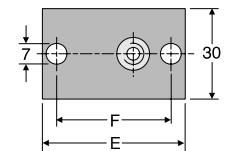
TUBE FITTING PART #	GROUP #	D (mm)	L (mm)	STANDARD FROM STOCK
SSLA0X	0	M6 x 1	30	•
SSLA2/SSB1X	2	M6 x 1	35	•
SSLA3X	3	M6 x 1	40	•
SSLA4X	4	M6 x 1	45	•
SSLA5X	5	M6 x 1	60	•
SSLA6X	6	M6 x 1	70	•



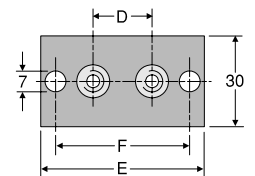
APLA

Weld Plate – Long

TUBE FITTING PART #	GROUP #	D (mm)	E (mm)	F (mm)	STANDARD FROM STOCK
APLA0X	0	—	58	44	•
APLA1X	1	20	64	50	•
APLA2X	2	26	70	56	•
APLA3X	3	33	78	64	•
APLA4X	4	40	87	73	•
APLA5X	5	52	100	86	•
APLA6X	6	66	116	100	•



Group 0

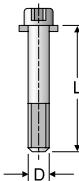


Groups 1-6

ISA

Cap Screws

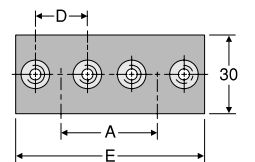
TUBE FITTING PART #	GROUP #	D (mm)	L (mm)	STANDARD FROM STOCK
ISA0X	0	M6 x 1	20	•
ISA2X	2	M6 x 1	25	•
ISA3X	3	M6 x 1	30	•
ISA4X	4	M6 x 1	35	•
ISA5X	5	M6 x 1	50	•
ISA6X	6	M6 x 1	60	•



APDA

Double Weld Plate

TUBE FITTING PART #	GROUP #	A (mm)	D (mm)	E (mm)	STANDARD FROM STOCK
APDA0X	0	30	—	61	•
APDA1X	1	35	20	69	•
APDA2X	2	43	26	86	•
APDA3X	3	52	33	104	•
APDA4X	4	60	40	120	•
APDA5X	5	75	52	145	•
APDA6X	6	90	66	176	•



Dimensions and pressures for reference only, subject to change.